



“The Bolt on Finishing Edge System nearly paid for itself in the first week of use. Our welding shop generally requires 6 to 8 hours to weld on a finishing edge. The labor cost savings alone has made the Bolt On Finishing Edge from Dura-Tuff Wear Products a smart investment. It takes just minutes to install and uninstall the Bolt-On Finishing Edge and best of all; it does not require any welding—ever.”

Russell K. Johnson, Point Shop Supervisor, Geneva Rock Products



“My company has been using the Bolt On Finishing Edge System from Dura-Tuff Wear Products for nearly a year. As a land developer and contractor, my digging and trenching needs fluctuate daily. I use the Bolt-On Finish Edge System for pipe trenches, footings and foundations, and water pond side walls. In addition, when I needed a larger finishing edge for hillside landscaping, Dura-Tuff Wear Products built a custom 8 footer! I would definitely recommend the Bolt On Finishing Edge System for any excavator and backhoe loader application.”

Dan Hogan, Owner, FoxRidge Development



“We constantly deal with welded-on finish edges with at customers have not removed before returning equipment. We lose time and money when we have to cut off edges and replace bucket tips. With the Bolt On Finishing Edge System from Dura-Tuff Wear Products, the rental store and our customers have an easy, time and money saving alternative to welded-on finish edges.”

Jeff Langford, Rental Yard Foreman, CAT Rental Store

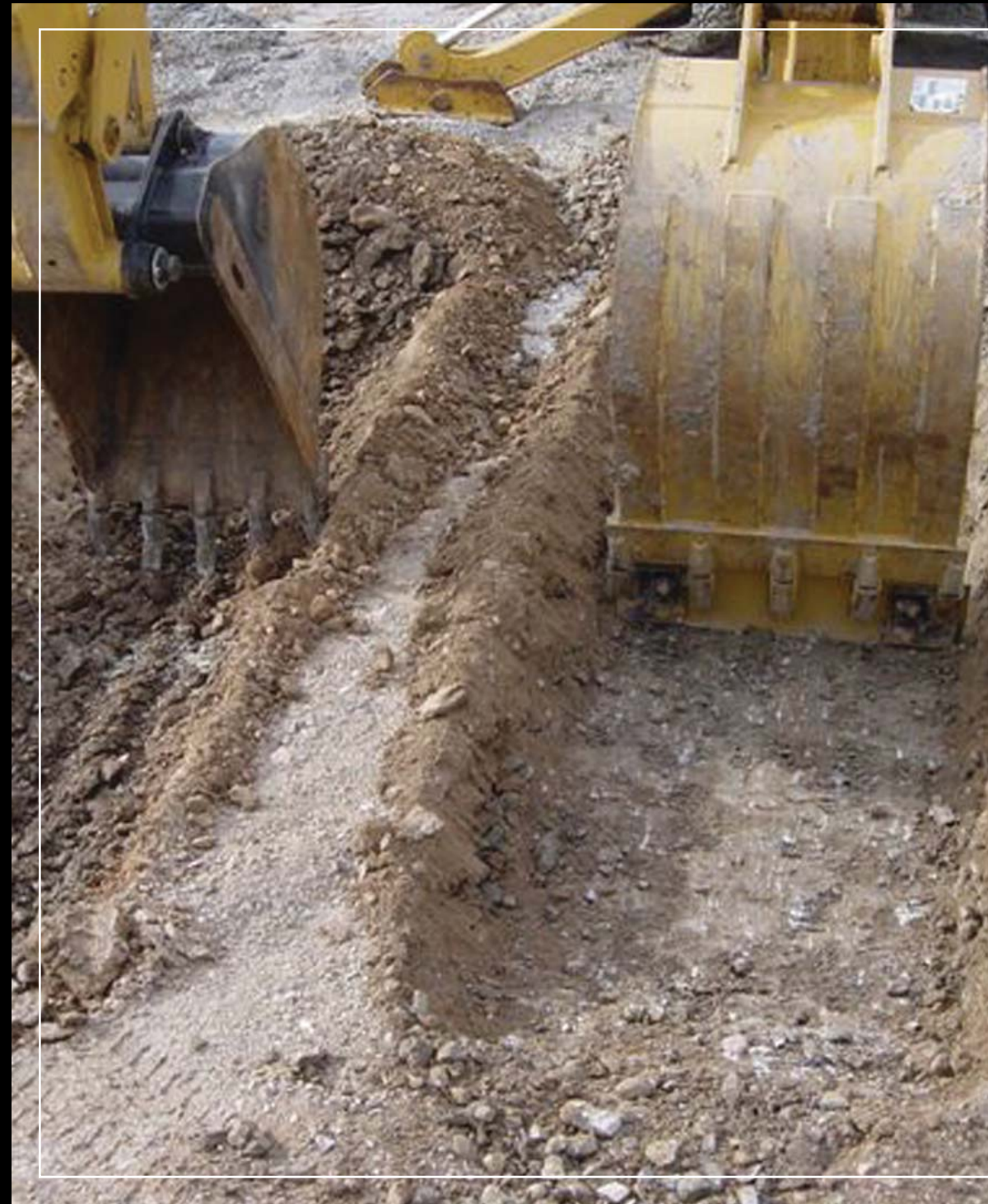


“With limited budgets, the public works departments are always conscious of new products that can save the county money. Welding a finishing edge on an excavator or backhoe loader requires us to constantly cutoff worn edges and replace bucket tips. The Bolt-on Finishing Edge System from Dura-Tuff Wear Products solves this problem because it does not require any welding. It can be installed and uninstalled in minutes. And, should one side of the Bolt On Finishing Edge show signs of wear, the edge can be reversed which is like getting a new edge at no additional cost.”

Bob A Petro, Vehicle Maintenance Supervisor, Davis County

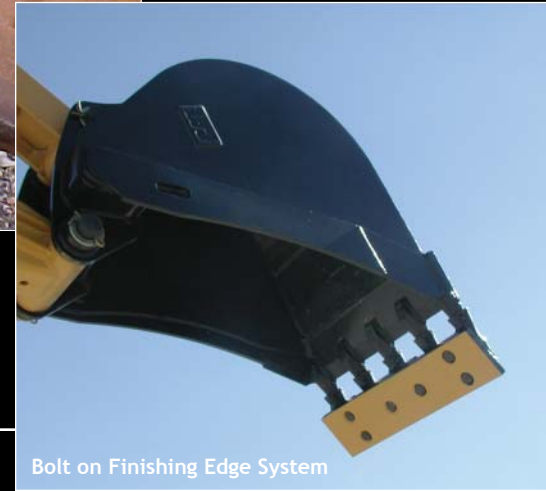


PO Box 734 (84044)
5065 W 2100 S
SLC, UT 84120
t: (801) 973.8900
f: (801) 973.4884
www.dura-tuff.com



**What if changing
your finishing edge
was as easy as
changing your tips?**

It is now.



Traditional vs. Bolt on Finishing Edge System

For a clean trench floor and a straight edge finish, try the finishing system that is changeable in less than ten minutes. No more welding. No more tied up buckets. You are now free to use the bucket teeth or finishing edge as often as you would like.

What it takes	Bolt on Finishing Edge System	Traditional weld-on edge
Welding required	No	Yes.
Can be installed or removed in 10 minutes	Yes	No, 1 st you'll need to cut & fit an edge and 2 nd weld the edge. (Could be as long as 2 hours.)
Ties up the bucket	No	No, but removal is not a simple process and can even be impossible.
Reversible for double the life	Yes	No, if you take off the edge your adapters could bend and the edge will no longer fit.
Custom fit to bucket and tooth (allows for bent or misplaced adapters)	Yes	No, if you take off the edge your adapters could bend and the edge will no longer fit.
Eliminates the need for manual shoveling	Yes	Yes, but the edge cannot be easily removed when digging is required.
Uses hardened steel (Rockwell C hardness 42-45)	Yes	Depends, on what is available in your scrap pile.
Maintains a right angle edge	Yes	Probably not, because most scap metal is a soft mild steel and will wear quickly.
Removable and reusable again and again	Yes	No, a weld-on edge is not intended to be removed. You may pay a welder or haul a torche to the job site to cut it off.
System can be used on multiple machines	Yes	No, a weld-on edge is not transferable to other machines.