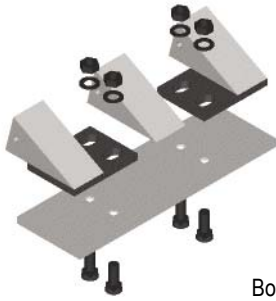
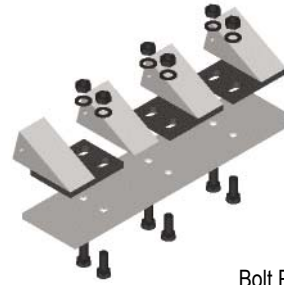


Patterns for Installation

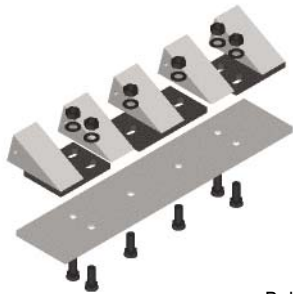
Ground Engaging Tools - Bolt on Finishing Edge System



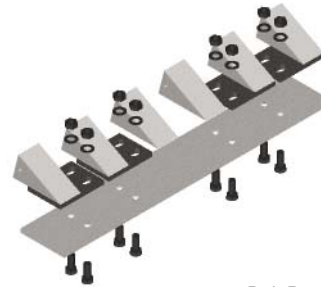
Bolt Pattern "A"
1 Left & 1 Right Receiver



Bolt Pattern "B"
2 Lefts & 1 Right Receiver



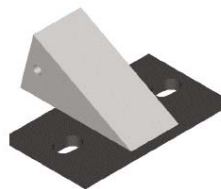
Bolt Pattern "C"
1 Left, 1 Center, & 1 Right Receiver



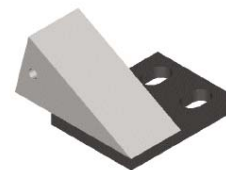
Bolt Pattern "D"
2 Lefts & 2 Right Receivers



Left Receiver



Center Receiver



Right Receiver

Instructions	3 items are critical for proper edge selection. *
	(1) Bucket width. (Bucket width is measured from outside edges of the teeth)
	(2) Number of teeth on the bucket
	(3) Tooth part number

* See page 28 for measuring guide.